



# DISPLAY BUYERS GUIDE

# Contents

Retractable Banner Stands	<b>5-14</b>
Tension Banner Stands	<b>15-17</b>
Outdoor Tension/Outdoor Retractable Banner Stands	<b>18</b>
Tradeshow Displays	<b>19-23</b>
Outdoor Displays	<b>24-27</b>
Information & Poster Displays	<b>28-31</b>
Wide Format Accessories	<b>32</b>
Display Lighting	<b>33</b>

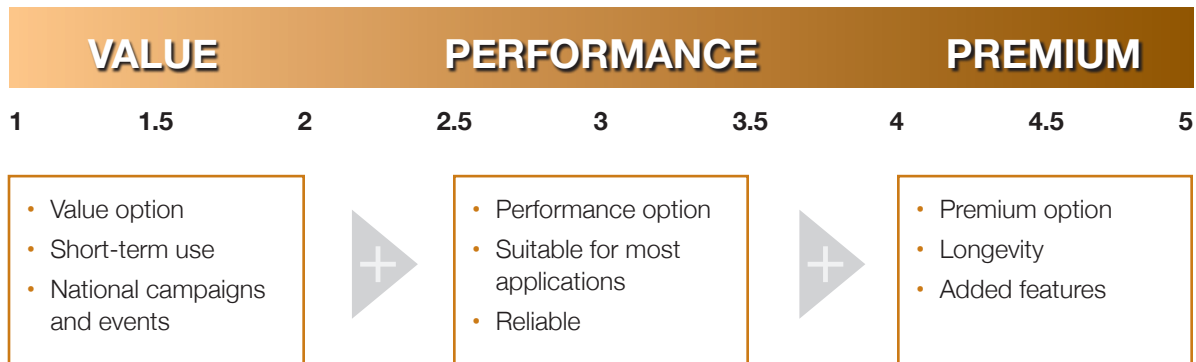


### Standards Assessment Verified

Retractable Banner Stands are designed to offer a portable and easy-to-use method of displaying printed graphics.

The SAV Rating involves comprehensive testing which takes into account quality and specifications of materials and components used in the construction of the stand, its ability to stand up to intended performance level when in use, the features that the stand offers, and it's overall usability.

Selecting the appropriate Retractable Banner Stand for its proposed use is essential and the SAV Rating helps determine which one is the right choice for the application.





### LONDON (SILVER)

- Economy retractable banner stand
- Silver finish with black accents
- Clamp top bar
- Includes carry bag
- Optional spotlight available – see page 33

SAV Rating:  1.5



Part #	Description	W	H
INE183799	London – 22" – Silver	22"	60"
INE184108	London – 24" – Silver	24"	78¾"
INE183721	London – 31½" – Silver	31½"	78¾"
INE183724	London – 33½" – Silver	33½"	78¾"
INE184078	London – 36" – Silver	36"	78¾"





### LONDON (BLACK)

- Economy retractable banner stand
- Black finish
- Clamp top bar
- Includes carry bag
- Optional spotlight available – see page 33

SAV Rating:  1.5



Part #	Description	W	H
INE183823	London – 31½" – Black	31½"	78¾"
INE183892	London – 33½" – Black	33½"	78¾"
INE184147	London – 36" – Black	36"	78¾"



## TURIN

- Value retractable banner stand
- Clamp top bar
- Includes padded carry bag
- 48" and 60" widths come with two poles for additional stability
- Optional spotlight available – see page 33

SAV Rating:  2.0



Part #	Description	W	H
INE185039	Turin – 33½"	33½"	78¾"
INE184054	Turin – 48"	48"	78¾"
INE184057	Turin – 60"	60"	78¾"



**DUBLIN**

- Double-sided value retractable banner stand
- Clamp top bars
- Includes carry bag

SAV Rating:  2.5



Part #

Description

W

H

INE183325

Dublin - 33½" - Double-sided

33½"

78¾"





**PARIS**

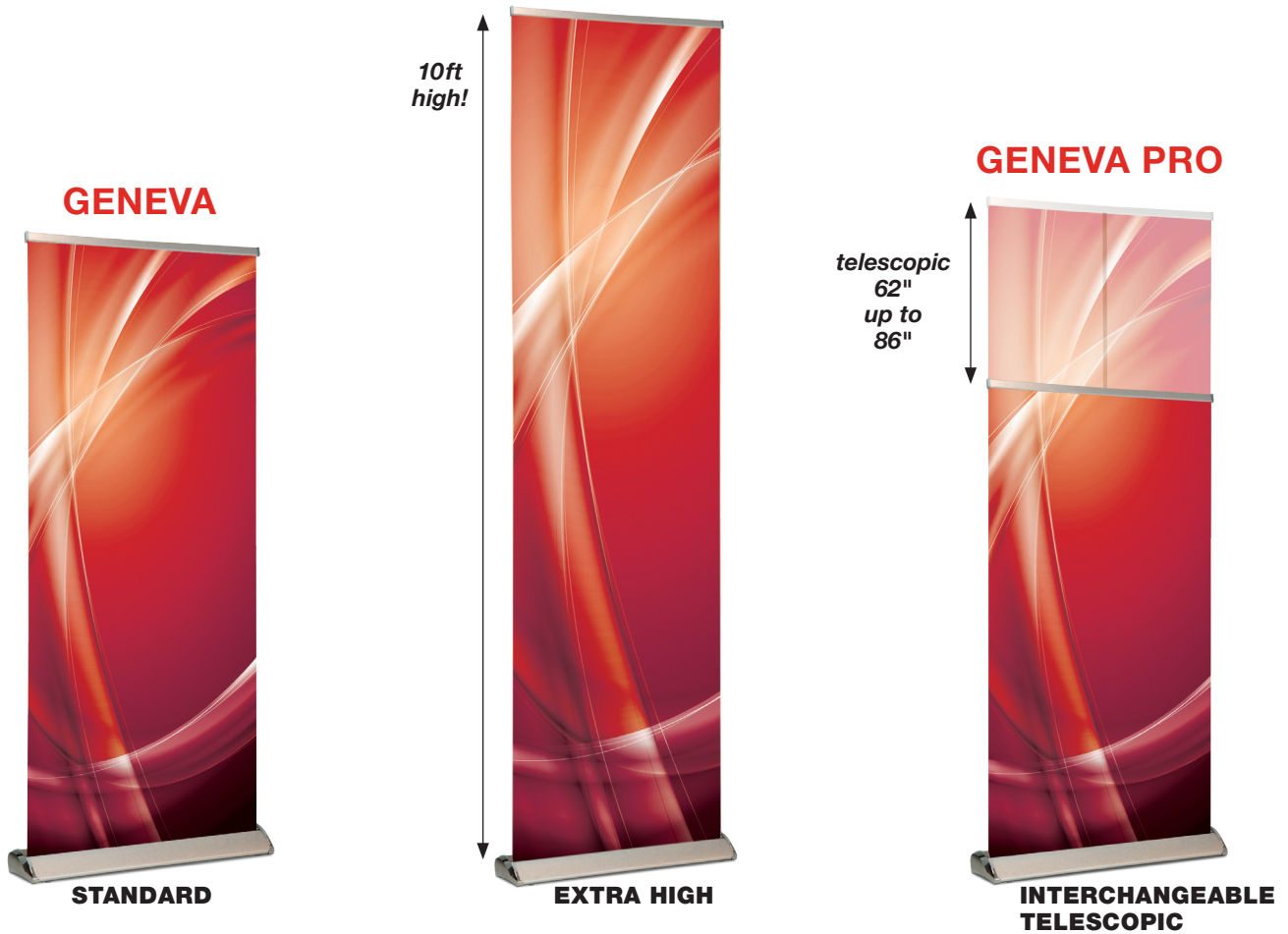
- Performance retractable banner stand
- Clamp top bar
- Includes padded carry bag
- Optional spotlight available – see page 33

SAV Rating:  3.5



Part #	Description	W	H
INE183259	Paris – 33½"	33½"	78¾"
INE816533	Paris – 33½"	33½"	62"-86"
INE813262	Paris – 39¾"	39¾"	78¾"

**GENEVA PLUS**



**GENEVA**



**Single-sided**



**Double-sided**

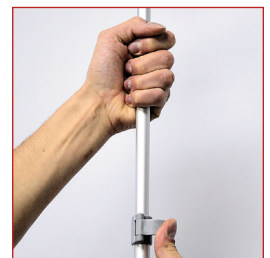
- Premium retractable banner stand
- Chrome-effect end caps
- Clamp top bar(s)
- Adjustable feet underneath base for uneven floors
- Includes padded carry bag
- No protruding feet
- 48" and 60" width banner stands have two poles for maximum stability
- GENEVA PLUS and GENEVA PRO stands feature hook and loop fastening to the leader. Hook fastener comes mounted on the leader and a length of loop fastener attaches to the bottom of the printed banner. Two lengths of adhesive loop fastener are included with each stand, allowing for two different banners which can be changed over in the stand
- Additional banner sets (including four lengths of adhesive loop fastener for four additional banners) can be ordered for the GENEVA PLUS and GENEVA PRO stands
- Optional spotlight available for single-sided stands – see page 33

SAV Rating: 4.0

**GENEVA PRO**



**Interchangeable Hook and Loop Banner Attachment**



**Telescopic Pole**

Part #	Description	W	H
INE183238	Geneva – 33½"	33½"	78¾"
INE183802	Geneva – 33½" – Double-sided	33½"	78¾"
INE184150	Geneva – 36" – Double-sided	36"	78¾"
INE184084	Geneva – 48" – Double-sided	48"	78¾"
INE815681	Geneva Plus – 33½"	33½"	120"
INE815684	Geneva Plus – 36"	36"	120"
INE814341	Geneva Pro - 24"	24"	62" to 86"
INE814344	Geneva Pro – 33½"	33½"	62" to 86"
INE814347	Geneva Pro – 36"	36"	62" to 86"
INE814350	Geneva Pro – 48"	48"	62" to 86"
INE814353	Geneva Pro – 60"	60"	62" to 86"
INS816160	Additional banner set – 24" (4pk)	24"	
INS816163	Additional banner set – 33½" (4pk)	33½"	
INS816166	Additional banner set – 36" (4pk)	36"	
INS816169	Additional banner set – 48" (4pk)	48"	
INS816172	Additional banner set – 60" (4pk)	60"	

## TRAVEL CASE

- Hard shell travel case with inner foam padding for a snug fit and maximum protection
- Locking for security – comes with two keys
- Adjustable shoulder strap and molded handles
- Elastic straps inside hold the stand and the pole in place
- Overall size is 6" x 12" x 38"



Part #	Description
--------	-------------

INE185069 Travel Case

### Can be used with the following items ONLY:

1 x GENEVA / GENEVA PRO – 33½"W





## GENEVA TABLETOP

- Tabletop backdrop display that is easy to transport.
- Hook and Loop attachment of the banner
- Telescopic pole allows for a variety of banner heights
- Optional spotlight available – see page 33

SAV Rating:      **4.0**

Part #	Description	W	H
INE816590	Geneva Tabletop – 24"	24"	44" to 54"
INE816593	Geneva Tabletop – 33½"	33½"	32" to 54"
INE816599	Geneva Tabletop – 36"	36"	32" to 54"
INE816602	Geneva Tabletop – 48"	48"	32" to 54"
INE816605	Geneva Tabletop – 60"	60"	32" to 54"



## REGINA

- Small desktop retractable banner stand
- Chrome-effect end caps
- Lightweight aluminum construction
- Adhesive top bar

SAV Rating:       **1.5**

Part #	Description	W	H
INE183988	Regina	11"	17"

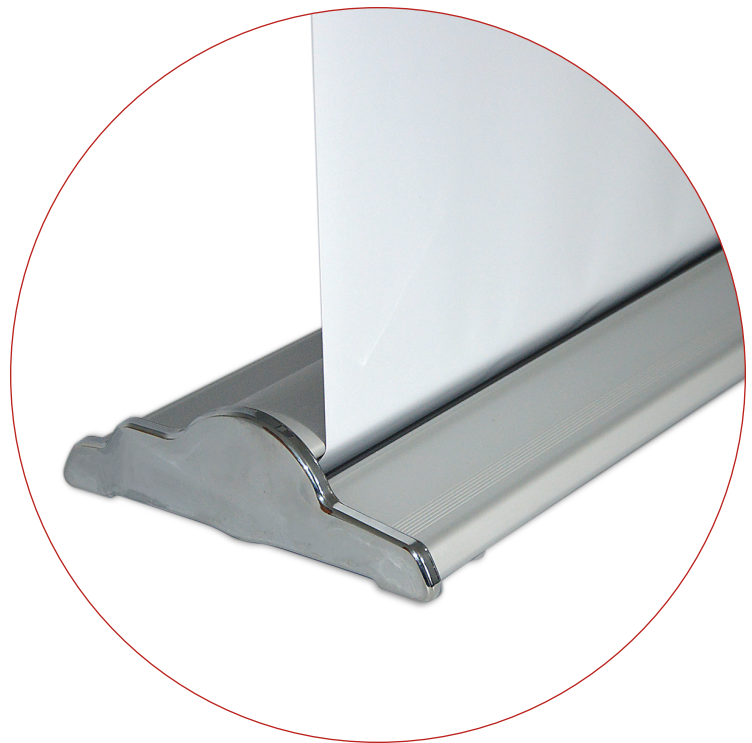




### MADRID

- Interchangeable retractable banner stand
- Chrome-effect end caps
- Clamp top bar
- Adjustable feet underneath base for uneven floors
- Clamp bottom bar in the base – no tape required
- Telescopic pole allows for visible banner heights of 62" up to 86"
- Includes padded carry bag
- No protruding feet
- Optional spotlight available – see page 33

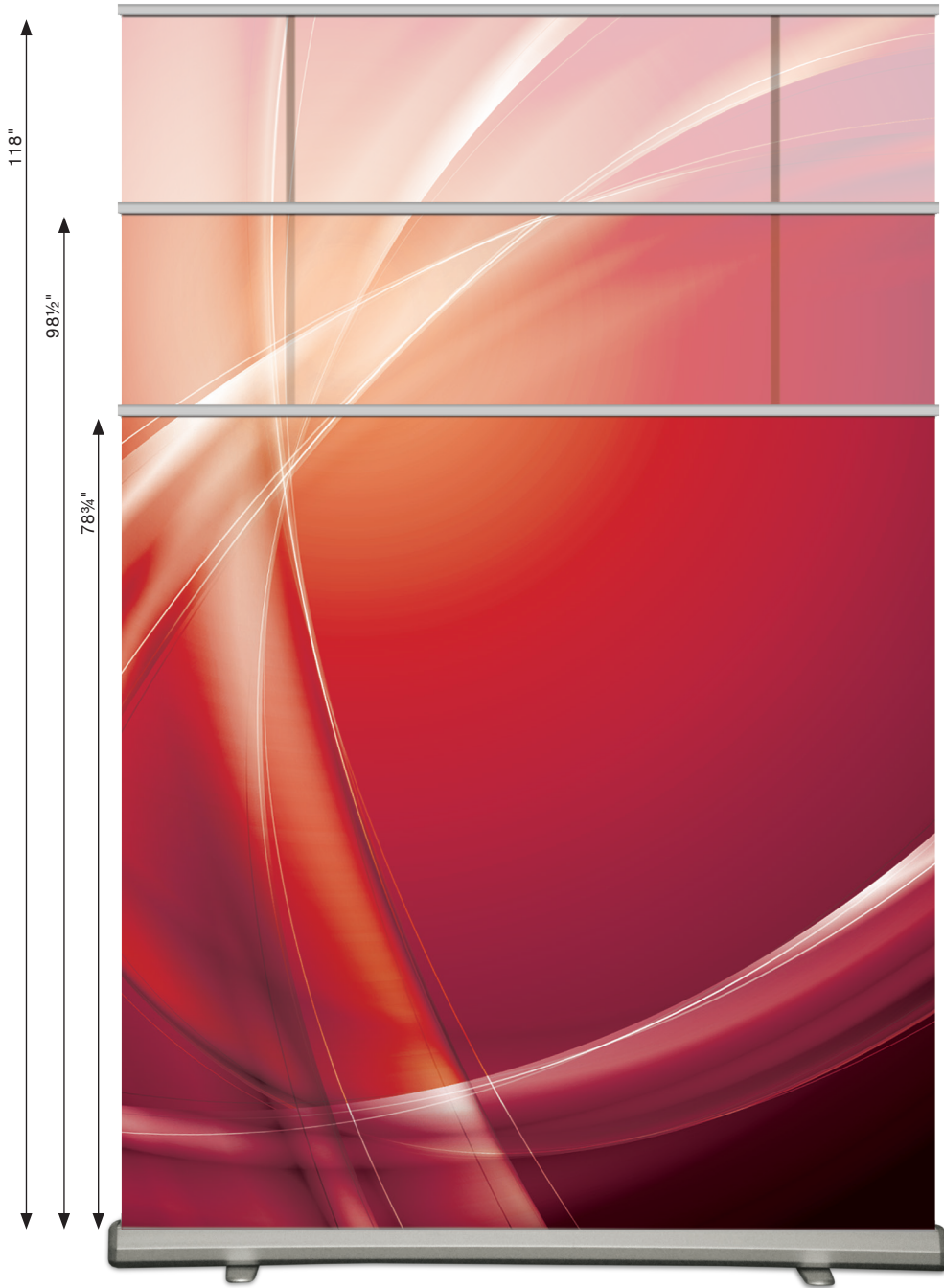
SAV Rating:  4.0



Part #	Description	W	H
INE183829	Madrid – 33½"	33½"	62" to 86"



# Retractable Banner Stands

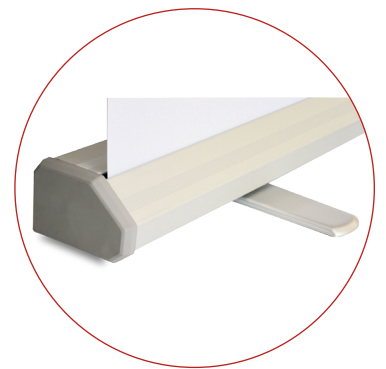


**Our  
largest  
retractable  
banner  
stand**

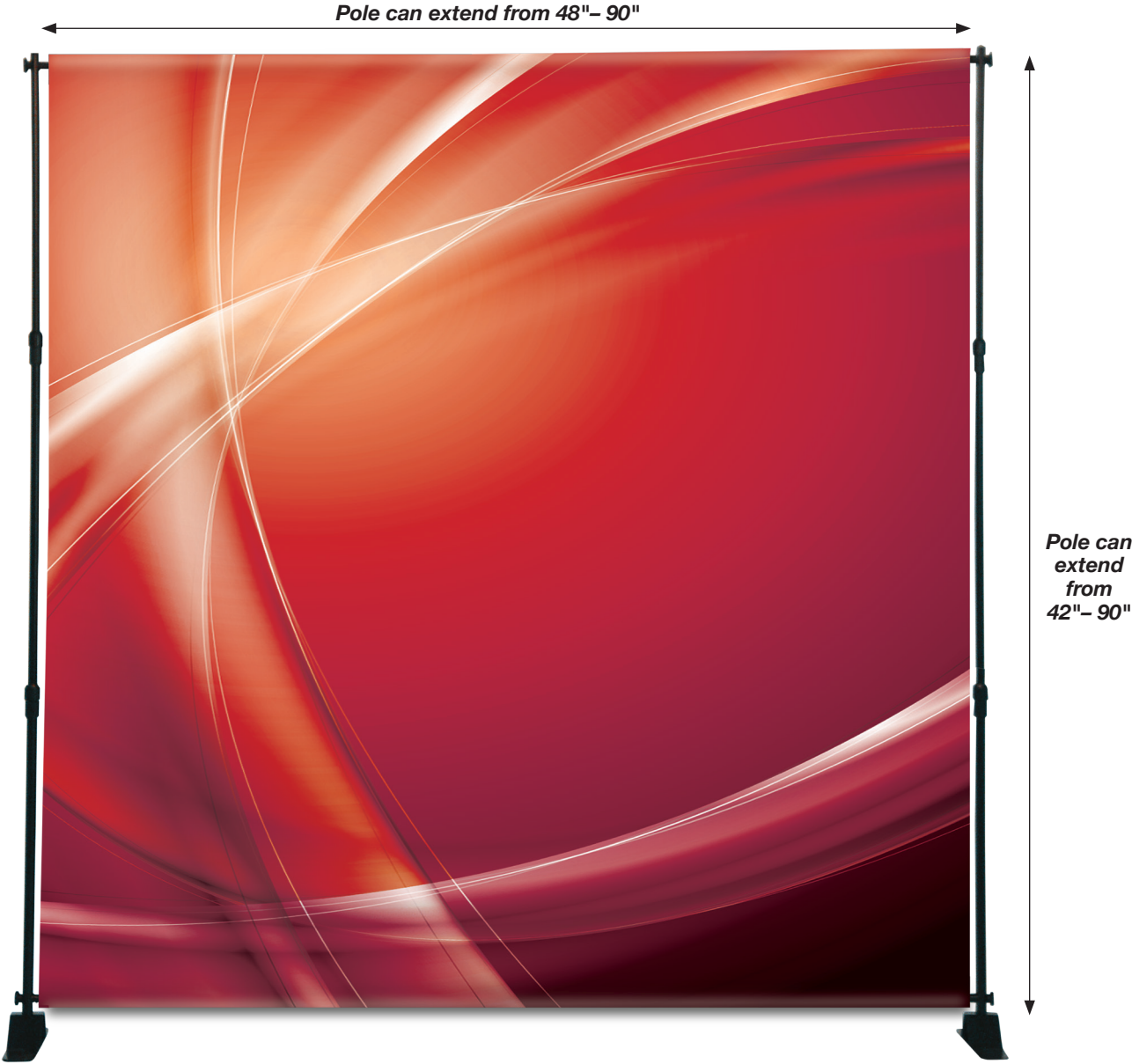
## MONACO

- Giant retractable banner stand
- Telescopic poles for maximum visible banner height of 10ft make this our largest retractable banner stand!
- Pole storage inside the base
- Includes padded carry bag
- Optional spotlight available – see page 33

SAV Rating:  3.5



Part #	Description	W	H
INE183484	Monaco	78¾"	78¾", 98½" or 118"



**BERLIN**

- Adjustable banner stand for large graphic backdrops
- Can be used as a single or double sided unit
- Telescopic poles for different heights and widths
- Hang banners with pole pockets at the top and bottom
- Includes carry bag



Part #	Description	W	H
INE183826	Berlin	48" to 90"	42" to 90"



## PORTO

- Quick assembly time
- Graphic mounted using grommets
- Rubber, non-slip feet
- Includes carry bag



Part #	Description	W	H
INE183379	Porto – small	24"	63"
INE183382	Porto – large	31½"	72"

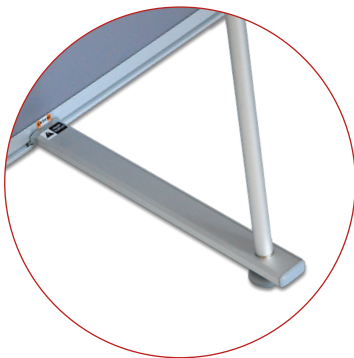
**OSLO**



**OSLO DOUBLE**



**OSLO TRIPLE**



- Lightweight aluminum construction
- Quick assembly time
- Top and bottom clamps for easy graphic changes

- Includes carry bag
- Optional spotlight available for the OSLO – see page 33
- The triangular prism shape of the OSLO TRIPLE allows graphics to be viewed at any angle

Part #	Description	W	H
INE815825	Oslo – 24"	24"	78¾"
INE183805	Oslo – 31½"	31½"	78¾"
INE815831	Oslo – 48"	48"	78¾"
INE815837	Oslo – 60"	60"	78¾"
INE183811	Oslo Double	31½"	78¾"
INE183688	Oslo Triple	35¾"	78¾"





### VENICE

- Suitable for outdoor use
- Quick assembly time
- Plastic base can be filled with water or sand for stability
- Can be used single or double sided
- Graphic mounted using grommets
- Includes carry bag

**Note:** For outdoor displays with hollow plastic bases, use additives or sand when using in temperatures below 32°F.

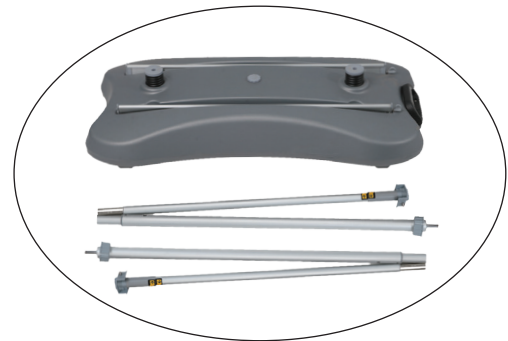
Part #	Description	W	H
INE183628	Venice	31½"	72"



### BARCELONA

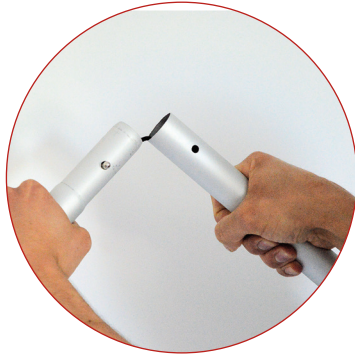
- Double-sided outdoor retractable banner stand
- Plastic base can be filled with sand or water for stability
- Twist-out foot for extra support
- Wheeled base for easy transportation
- Includes carry bag

**SAV Rating:**  3.5



**Note:** For outdoor displays with hollow plastic bases, use additives or sand when using in temperatures below 32°F.

Part #	Description	W	H
INE183487	Barcelona	31½"	78¾"



## NEWARK

- Sweeping vertical fabric tension display
- Strong and stable with support feet
- System dismantles to compact size with carry bag for easy transportation
- Graphic width is 36", overall height is 92"
- Optional light is also available – see page 33

Part #	Description
--------	-------------

INE184021	Newark
-----------	--------



## TAMPA

- Rectangle counter for tensioned fabric surround
- Vertical pole supports enable quick and simple assembly
- System dismantles to compact size with carry bag for easy transportation
- Overall size is 31½" W and 40" H

Part #	Description
--------	-------------

INE184015	Tampa
-----------	-------



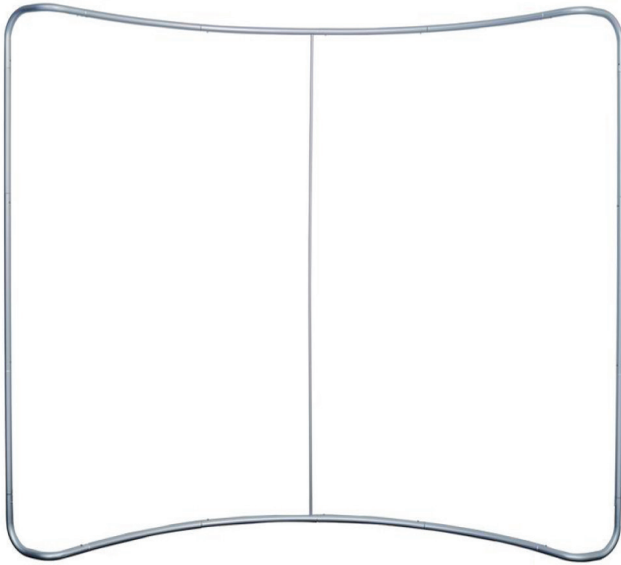
## BRISBANE

- Counter unit flat-packs for easy transportation
- Quick, no-tools installation
- Can be used with or without header and pole kit (included)
- Includes carry bags
- Overall size is 36" W x 37" H
- Overall height to top of header is 86"



Part #	Description
--------	-------------

INE183187	Brisbane
-----------	----------



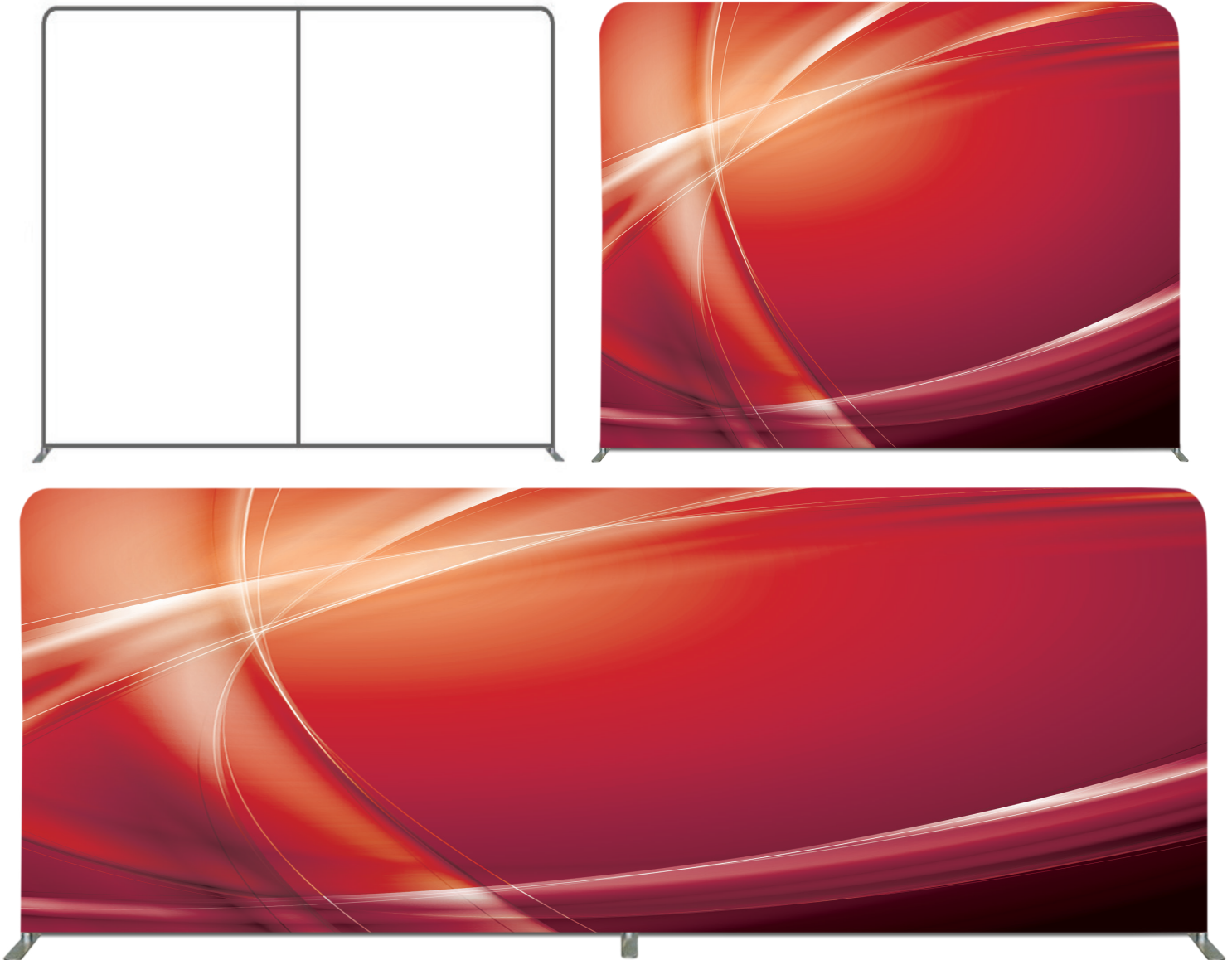
## CHARLESTON

- Freestanding curved fabric tension display
- Lightweight and sturdy framework enables quick and simple assembly
- System dismantles to compact size with carry bag for easy transportation
- Optional lights are also available – see page 35
- These displays are often used with the TAMPA counter units – see page 19



Part #	Description	W	H
INE184135	Charleston – 8ft	8ft	7½ft
INE184000	Charleston – 10ft	10ft	7½ft
INE184159	Charleston – 20ft	20ft	7½ft





## MADISON

- Straight fabric tension display with support feet
- Lightweight and sturdy framework enables quick and simple assembly
- System dismantles to compact size with carry bag for easy transportation
- Optional lights are also available – see page 35
- These displays are often used with the TAMPA counter units – see page 19



Part #	Description	W	H
INE184162	Madison – 8ft	8ft	7½ft
INE184003	Madison – 10ft	10ft	7½ft
INE184165	Madison – 20ft	20ft	7½ft





optional lights  
(see page 35)

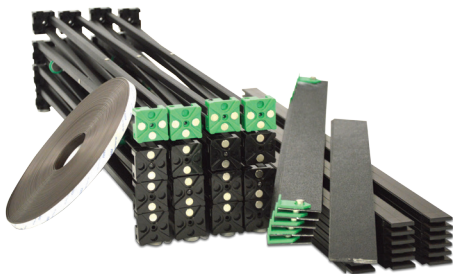


## SYDNEY II

- Curved magnetic pop-up display with strong and lightweight aluminum frame designed for quick assembly
- Wheeled case can be graphic-wrapped and used as a counter
- Wheeled case overall size is 16" x 27½" x 38½"
- Wheeled case has built-in wheels and handle for easy transportation
- Optional fold-out wooden countertop available for the wheeled case
- Optional lights are also available – see page 33
- Additional graphics kit available. This kit works for both sizes of the SYDNEY II.



Part #	Description	W	H
INE815359	Sydney II – 8ft	8ft	7½ft
INE815362	Sydney II – 10ft	10ft	7½ft
INS816487	Additional graphics kit		
INS184752	Fold-out wooden countertop for transport case		





## MELBOURNE

- Strong and lightweight aluminum pop-up frame designed for quick assembly
- Hook fastener is pre-mounted on the frame
- Roll of loop fastener is included to sew onto the fabric graphic
- Wheeled case included for easy transportation
- Graphic can also be wrapped around the ends of the unit
- Optional lights are also available – see page 33

Part #	Description	W	H
INE183343	Melbourne – 7½ft	7½ft	7½ft
INE183847	Melbourne – 10ft	10ft	7½ft



Part #	Description
INE814615	Niagara – 18" wide
INE814618	Niagara – 24" wide
INE814621	Niagara – 30" wide
INE814624	Niagara – 36" wide
INE814639	Niagara – 18" wide
INE814642	Niagara – 24" wide
INE814645	Niagara – 30" wide
INE814648	Niagara – 36" wide
INE814660	Additional stainless steel band

### NIAGARA

- Banner hardware kits for outdoor street poles
- Heavy duty mounting brackets and fiberglass poles
- Comes with four stainless steel bands for secure installation on poles of multiple diameters
- Additional stainless steel bands can be purchased as six bands can be used per set (as shown above)





### SEATTLE

- Can be used single or double sided
- Convenient front-loading snap frames
- Plastic base can be filled with water or sand for extra stability
- Protective graphic covers
- Base incorporates a handle and wheels making transport easy
- Heavy duty springs
- Overall height is 4ft

### AUSTIN

- Can be used single or double sided
- Convenient front-loading snap frame
- Protective graphic covers
- Steel support feet
- Heavy duty springs
- Overall height is 4ft

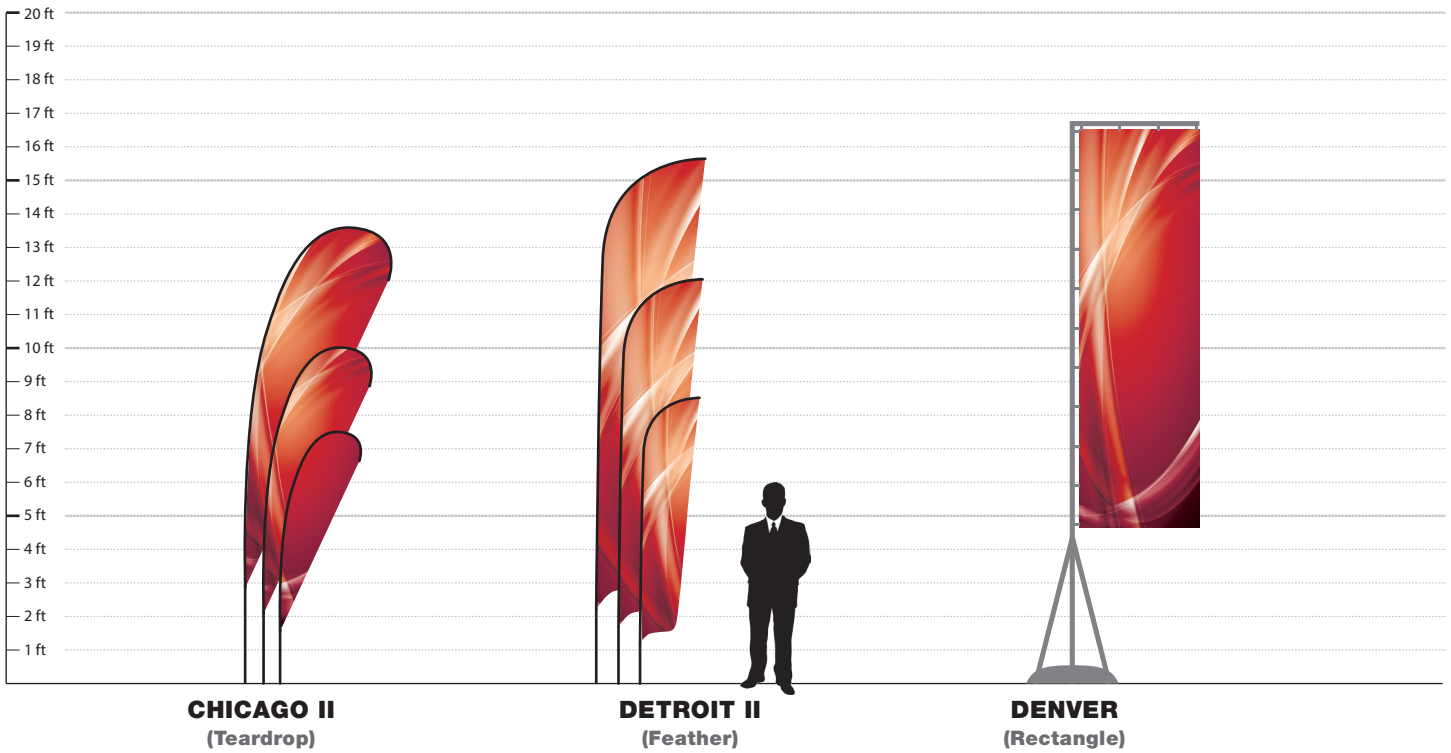
### BOSTON

- Can be used single or double sided
- Convenient front-loading snap frame
- Protective graphic covers
- Folds flat for easy transportation
- Overall height is 4ft

Part #	Description	W	H
INE183976	Seattle	24"	36"
INE184099	Austin	24"	36"
INE183790	Boston	24"	36"

**Note:** For outdoor displays with hollow plastic bases, use additives or sand when using in temperatures below 32°F.

## Outdoor Displays



### CHICAGO II / DETROIT II

- Premium Fiberglass flag poles for strength and durability
- All pole kits work with the base options shown this page
- Each pole kit comes with a carry bag

Part #	Description
INE816050	Chicago II 7.5' / Detroit II 8.5' Pole Kit
INE816053	Chicago II 10' / Detroit II 12' Pole Kit
INE816056	Chicago II 13.5' / Detroit II 15.5' Pole Kit
INE816080	Cross Base
INE816074	Spike Base
INE183772	Water Bag
INE816077	Vehicle Base

**Note:** Take down these products if inclement weather is forecast. These products are designed to withstand wind gusts of no more than 20mph. Heavy rain can reduce wind resistance.



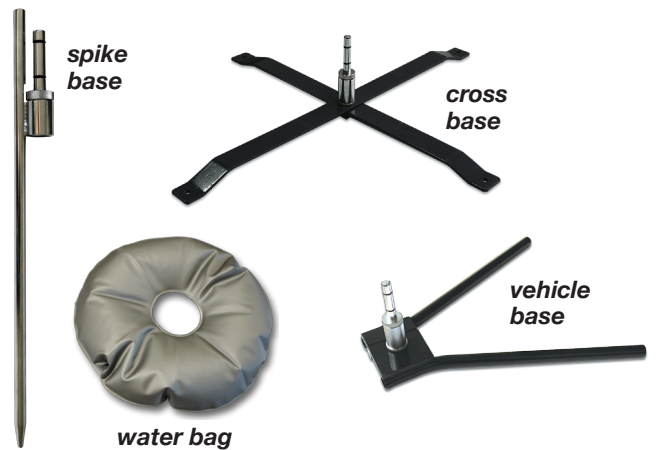
### DENVER

- Large portable flag pole
- Telescopic aluminum pole for quick assembly
- Base can be filled with water or sand for stability
- Flag sizes up to 46"W x 162"H
- Includes carry bags

Part #	Description	H
INE183580	Denver	17' max.

**Note:** For outdoor displays with hollow plastic bases, use additives or sand when using in temperatures below 32°F.

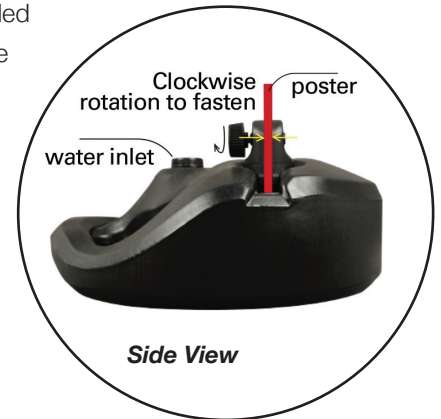
#### Bases for Rapid & Current





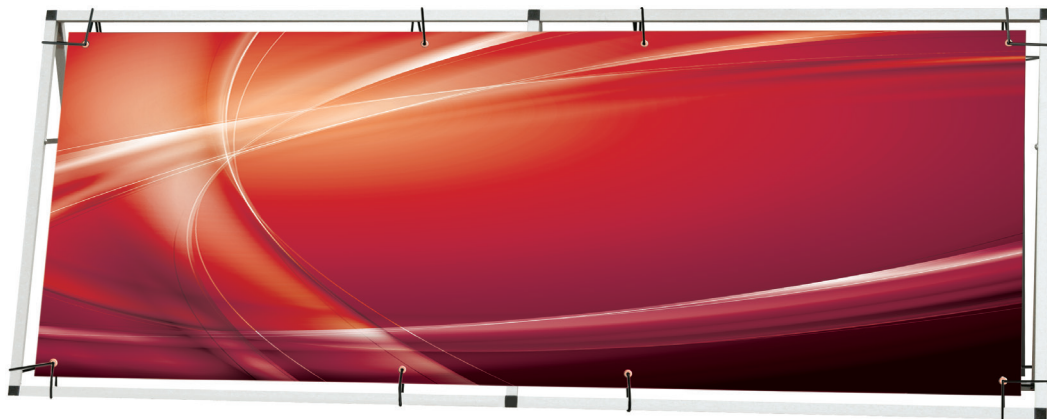
### PHILADELPHIA

- Can be used single or double-sided
- Suitable for indoor or outdoor use
- Plastic base can be filled with water or sand for extra stability
- Accepts graphics up to 3/8" thick
- Wide graphics can be displayed by using multiple bases at intervals
- Carry handles for easy transportation



Part #	Description	W	H
INE183850	Philadelphia	14" - 36"	24" - 72"

**Note:** For outdoor displays with hollow plastic bases, use additives or sand when using in temperatures below 32°F.

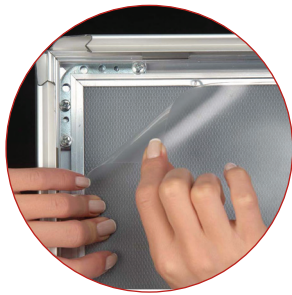


### MEMPHIS

- Large banner frame can be used single or double sided
- Lightweight and strong aluminum construction
- Easy push-fit assembly, no tools required
- Ground pegs supplied
- Includes carry bag

Part #	Description	W	H
INE183625	Memphis 8ft	92½"	33½"
INE815786	Memphis 12ft	141"	33½"

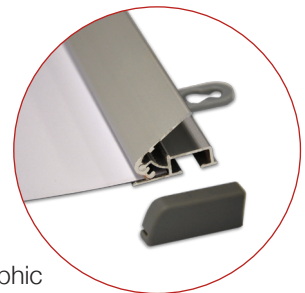




### TORONTO

- Aluminum snap frame
- Includes wall fixings and protective graphic cover

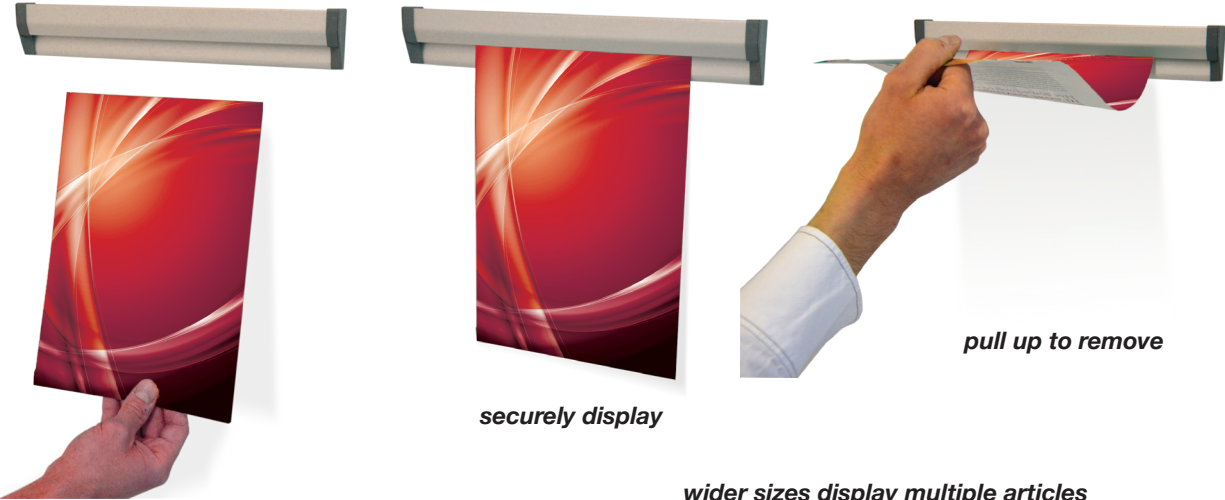
Part #	Descr.	Frame Profile Width	W	H
INE814400	Silver	1"	8½"	11"
INE814401	Black	1"	8½"	11"
INE814404	Silver	1"	11"	17"
INE814405	Black	1"	11"	17"
INE814408	Silver	1¼"	16"	20"
INE814409	Black	1¼"	16"	20"
INE814410	Silver	1¼"	17"	22"
INE814411	Black	1¼"	17"	22"
INE814412	Silver	1¼"	18"	24"
INE814413	Black	1¼"	18"	24"
INE814420	Silver	1¼"	22"	28"
INE814421	Black	1¼"	22"	28"
INE814424	Silver	1¼"	24"	36"
INE814425	Black	1¼"	24"	36"
INE814428	Silver	1¼"	30"	40"
INE814429	Black	1¼"	30"	40"
INE814432	Silver	1¼"	36"	48"
INE814433	Black	1¼"	36"	48"



### MONTREAL II

- Aluminum poster clamp
- Suitable for wall-mounting or ceiling suspension
- Clamps securely on the top and bottom of the graphic

Part #	Description	W	H
INE816613	Montreal II – 11"	11"	
INE816616	Montreal II – 22"	22"	
INE816622	Montreal II – 36"	36"	
INE816625	Montreal II – 48"	48"	

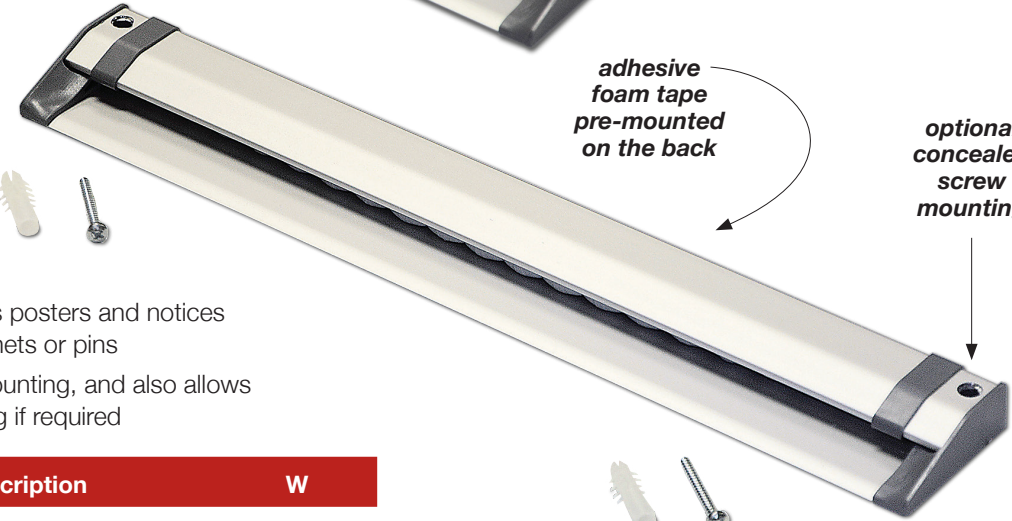


*push up to insert*

*securely display*

*pull up to remove*

*wider sizes display multiple articles*

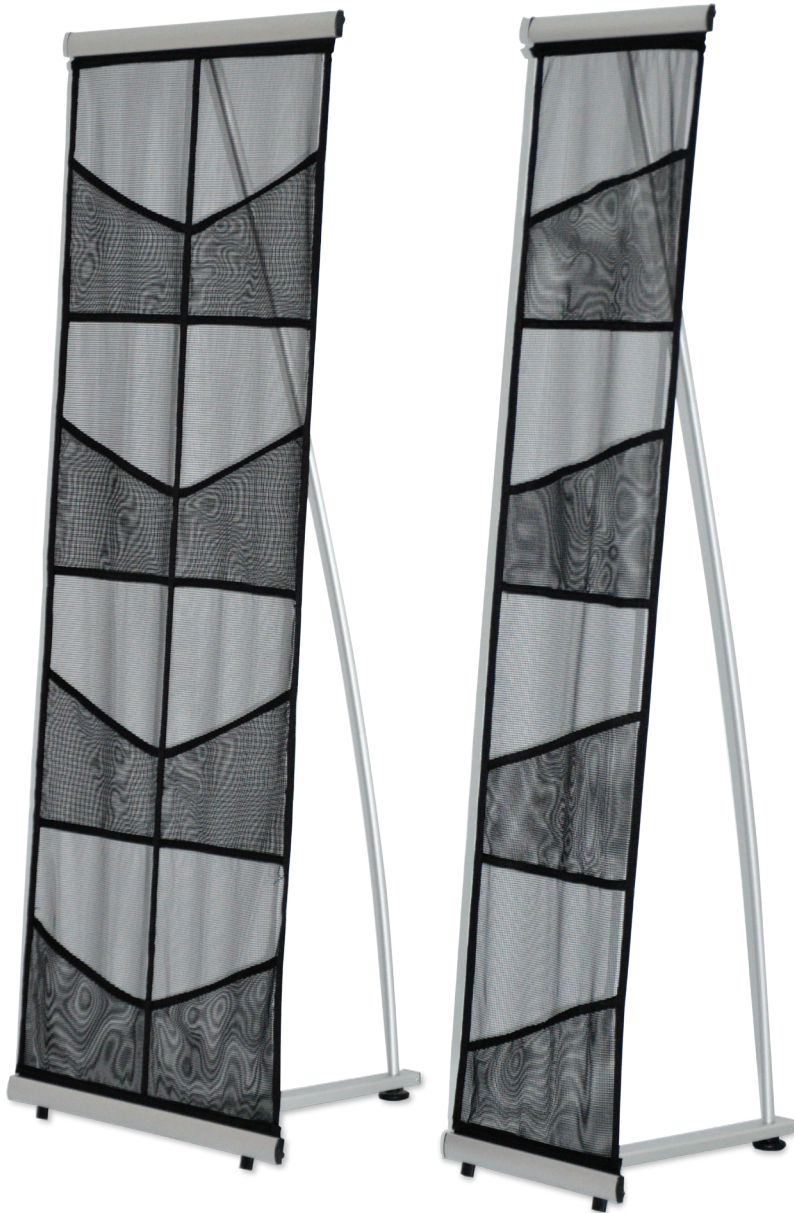


**MILAN**

- Clever design quickly displays posters and notices without the use of tape, magnets or pins
- Comes with foam tape for mounting, and also allows for concealed screw mounting if required

Part #	Description	W
INE814530	Milan – 1ft	12"
INE814531	Milan – 2ft	22¾"
INE814534	Milan – 4ft	46¼"
INE814535	Milan – 5ft	59"





### PANAMA

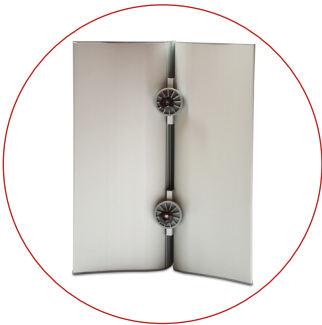
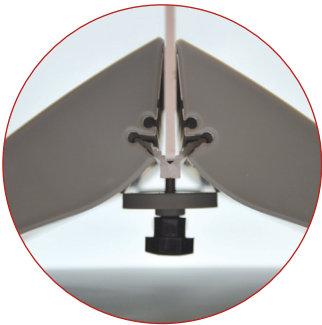
- This lightweight literature holder is a compact way to share printed media
- Available with either 4 or 8 pockets
- Each literature holder includes a carry bag

Part #	Description
INE183370	Panama – 4 pocket
INE183373	Panama – 8 pocket



**SASKATOON**

- Lightweight and strong aluminum base
- Accepts rigid graphics such as foamboard, corrugated plastic, acrylic, and aluminum composite from 1/4" to 1" thick
- Clamps onto graphic by tightening concealed knobs underneath the base – no tools required
- Attractive silver finish
- Quick set-up – no need to pre-drill the graphic
- Base width is 20"
- Multiple bases can be used for larger graphics

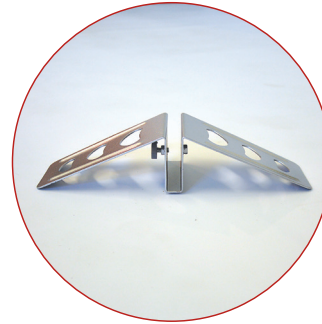
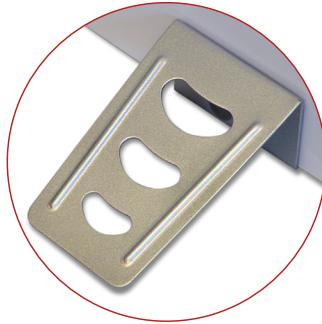


Part #	Description	W	H
INE183505	Saskatoon	20" to 48"	24" to 84"



**LINCOLN**

- Silver stand for rigid sign
- Use multiple LINCOLN stands for larger signs
- Hand-tighten screw to hold the sign in the stand
- Accepts 1/2" thick rigid signs
- Overall Size is 2 1/2"H x 4"W x 12"L



Part #	Description
INE184102	Lincoln

**MOTION Series**



**Grommet Press**

- Portable hand-operated grommet press can also be mounted onto work surface
- Easy set-up and quick, single-action operation
- Strong and durable
- Includes #2 die set
- Overall size is 4" x 10" x 21"

**Grommets**

- High quality grommets made from solid brass – will not rust
- Available in brass or nickel finish
- 500 grommets per pack



**Media Rack**

- Rolling media rack designed to hold 16 rolls of 2" core media
- Heavy-duty locking castors for ease of control and protection of floor surfaces
- Collapses for easy shipping
- Holds up to 1000lbs

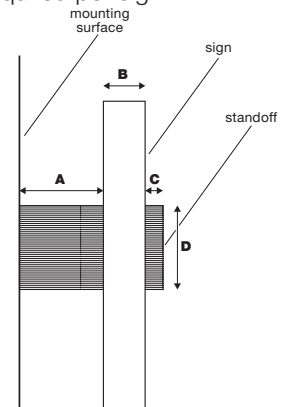
Part #	Description
INT624374	Grommet Press
INT624392	Grommets – #2 brass (500pk)
INT624395	Grommets – #2 nickel (500pk)
INT624251	Media Rack – 16 x 2" core
INE816691	Media Rack – 16 x 3" core



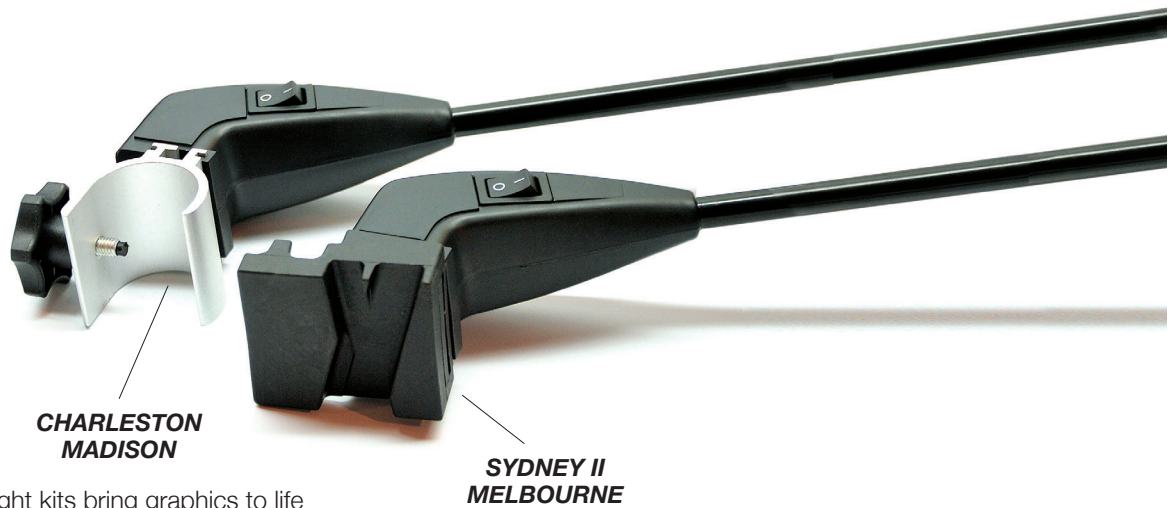
**GLAZE Series**

- Aluminum sign standoffs with a satin chrome finish give rigid signs a classy appearance while creating a 3D effect by holding them away from the wall
- Ceiling hanging edge grips are used for displaying rigid signage suspended from the ceiling
- Each ceiling hanging kit includes a ceiling fitting, 72" length of aircraft cable (which can be cut to the required length during installation), and an edge grip for the top of the sign substrate
- At least two ceiling hanging kits are required per sign

Part #	Description	A	B	C	D
		Barrel height	Sign thickness	Cap height	Diameter
INE814952	Standoff	¾"	up to ⅝"	5/32"	½"
INE814950	Standoff	1"	up to ½"	7/32"	¾"
INE814951	Standoff	1"	up to ½"	7/32"	1"
INE814989	Edge Grip	⅝"	¼"	⅖"	1"
INP839212	Ceiling Hanging Kit	N/A	⅜"	N/A	N/A







- Halogen or LED light kits bring graphics to life
- Fully adjustable heads angle and pivot for precise adjustment
- All banner stands 48" wide or wider have two poles so typically require two lights

Part #	Description
INS816460	Halogen light for CHARLESTON and MADISON
INS816463	LED light for CHARLESTON and MADISON
INS184406	Halogen light for SYDNEY II and MELBOURNE
INE184132	LED light for SYDNEY II and MELBOURNE
INE184105	LED light for all single-sided retractable banner stands as well as the OSLO

